



# GAT MONTHLY MEMBERSHIP PROGRESS REPORT

Results as of: 5/31/2023

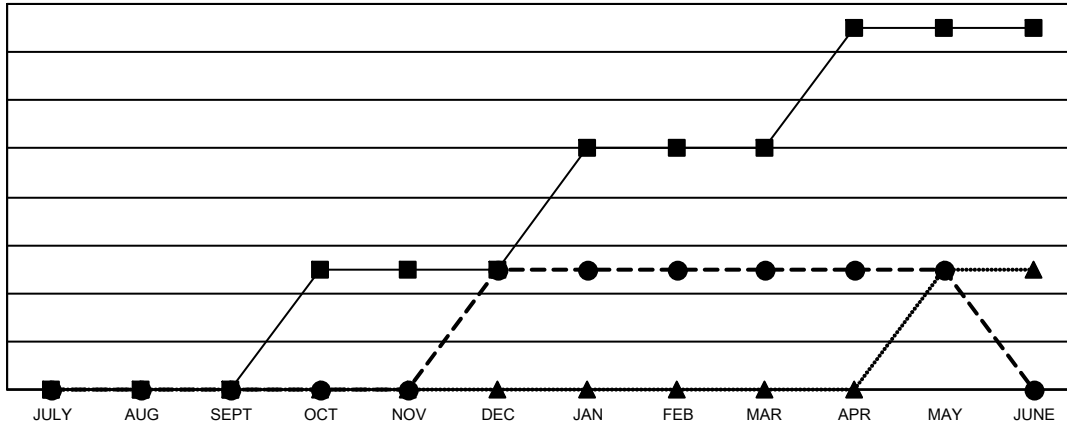
Multiple District 32

LOCATION: SOUTH CAROLINA

Clubs			
RESULTS FOR 2022-2023			
QUARTER	NEW CLUB GOAL	NEW CLUBS	DROPPED CLUBS
JULY/AUG/SEPT	0	0	1
OCT/NOV/DEC	1	1	1
JAN/FEB/MAR	1	0	0
APR/MAY/JUNE	1	0	0

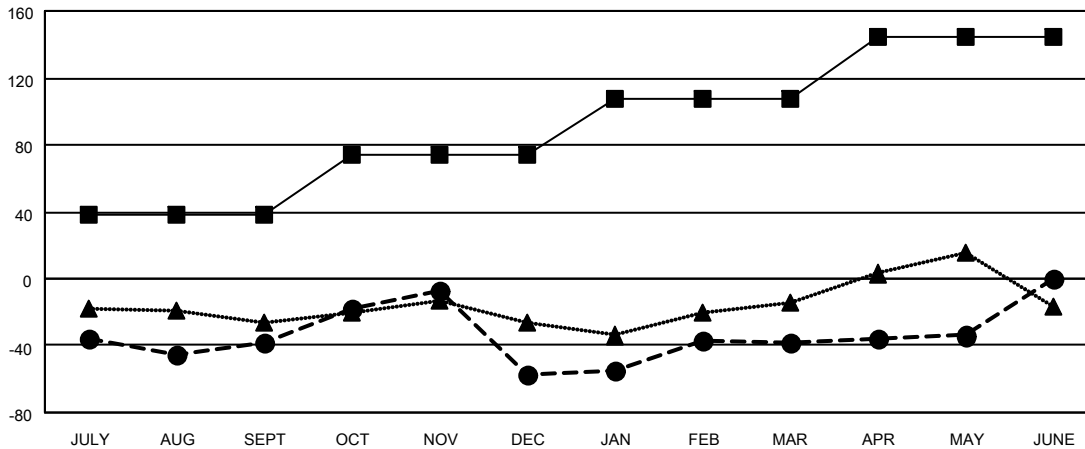
Members			
RESULTS FOR 2022-2023			
QUARTER	MEMBER GROWTH NET GOAL	MEMBER GROWTH ACTUAL	DROPPED MEMBERS ACTUAL (including transfers)
JULY/AUG/SEPT	38	93	122
OCT/NOV/DEC	36	123	135
JAN/FEB/MAR	34	90	67
APR/MAY/JUNE	36	59	52

GOALS AND ACTUAL NEW CLUBS CUMULATIVE



- - CURRENT YEAR GOALS FOR NEW CLUBS
- - CURRENT YEAR ACTUAL NEW CLUBS
- ▲ - LAST YEAR ACTUAL NEW CLUBS

GOALS AND ACTUAL MEMBERS CUMULATIVE



- - MEMBER GROWTH NET GOAL
- - MEMBER GROWTH ACTUAL
- ▲ - LAST YEAR MEMBERSHIP ACTUAL

DROPPED CLUBS: 2	
<b>DROPPED MEMBERS</b>	
DECEASED	69
CLUB CANCELLED	13
OTHER	294
<b>TOTAL</b>	<b>376</b>

72 CLUBS OF 123 ADDED 1 OR MORE NEW MEMBERS

[CLICK HERE FOR CUMULATIVE MEMBERSHIP DATA](#)

GENDER DISTRIBUTION	
MALE	1,982 (64.64%)
FEMALE	1,084 (35.36%)
NON BINARY	0 (0.00%)
PREFER NOT TO ANSWER	0 (0.00%)
<b>TOTAL FAMILY UNIT MEMBERS</b>	<b>614</b>
<b>FAMILY MEMBERS PAYING HALF DUES</b>	<b>312</b>